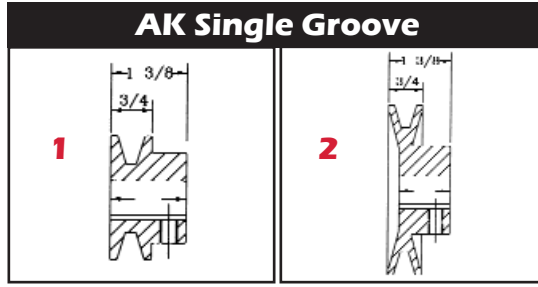


AK SHEAVES - FOR 3L, 4L & A Belts



AK - Bored to Size



AK PACKAGED

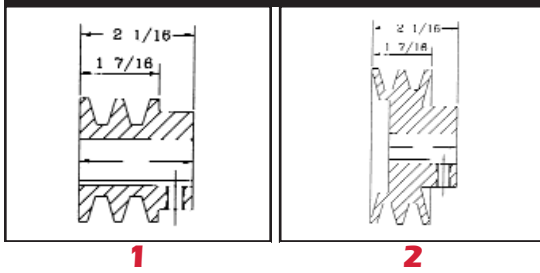
Diameter Out Side	Datum Dia			Draw Type	Bore Size										Wt. Lbs.	
	"A" Datum	"3L" Datum	1/2"		5/8"	3/4"	7/8"	15/16"	1"	1-1/8"	1-3/16"	1-7/16"				
1.75	1.50	1.16	1	AK17-1/2	AK17-5/8	AK17-3/4										.2
2.00	1.80	1.46	1	AK20-1/2	AK20-5/8	AK20-3/4	AK20-7/8									.3
2.10	1.90	1.56	1	AK21-1/2	AK21-5/8	AK21-3/4	AK21-7/8									.4
2.20	2.00	1.66	1	AK22-1/2	AK22-5/8	AK22-3/4	AK22-7/8									.5
2.30	2.10	1.76	1	AK23-1/2	AK23-5/8	AK23-3/4	AK23-7/8		AK23-1							.5
2.50	2.30	1.96	2	AK25-1/2	AK25-5/8	AK25-3/4	AK25-7/8		AK25-1	AK25-1-1/8						.5
2.60	2.40	2.06	2	AK26-1/2	AK26-5/8	AK26-3/4	AK26-7/8		AK26-1							.5
2.70	2.50	2.16	2	AK27-1/2	AK27-5/8	AK27-3/4	AK27-7/8		AK27-1							.6
2.80	2.60	2.26	2	AK28-1/2	AK28-5/8	AK28-3/4	AK28-7/8		AK28-1	AK28-1-1/8						.7
3.05	2.80	2.46	2	AK30-1/2	AK30-5/8	AK30-3/4	AK30-7/8		AK30-1	AK30-1-1/8						.7
3.25	3.00	2.66	2	AK32-1/2	AK32-5/8	AK32-3/4	AK32-7/8		AK32-1	AK32-1-1/8						.7
3.45	3.20	2.86	2	AK34-1/2	AK34-5/8	AK34-3/4	AK34-7/8		AK34-1	AK34-1-1/8						.9
3.75	3.50	3.16	2	AK39-1/2	AK39-5/8	AK39-3/4	AK39-7/8	AK39-15/16	AK39-1	AK39-1-1/8						1.4
3.95	3.70	3.36	2	AK41-1/2	AK41-5/8	AK41-3/4	AK41-7/8	AK41-15/16	AK41-1	AK41-1-1/8						1.5
4.25	4.00	3.66	1	AK44-1/2	AK44-5/8	AK44-3/4	AK44-7/8	AK44-15/16	AK44-1	AK44-1-1/8						1.5
4.45	4.20	3.86	1	AK46-1/2	AK46-5/8	AK46-3/4	AK46-7/8	AK46-15/16	AK46-1	AK46-1-1/8						1.5
4.75	4.50	4.16	1	AK49-1/2	AK49-5/8	AK49-3/4	AK49-7/8	AK49-15/16	AK49-1	AK49-1-1/8						1.7
4.95	4.70	4.36	1	AK51-1/2	AK51-5/8	AK51-3/4	AK51-7/8	AK51-15/16	AK51-1	AK51-1-1/8			AK51-1-3/16			1.7
5.25	5.00	4.66	1	AK54-1/2	AK54-5/8	AK54-3/4	AK54-7/8	AK54-15/16	AK54-1	AK54-1-1/8			AK54-1-3/16			1.8
5.45	5.20	4.86	1	AK56-1/2	AK56-5/8	AK56-3/4	AK56-7/8	AK56-15/16	AK56-1	AK56-1-1/8			AK56-1-3/16			1.9
5.75	5.50	5.16	1	AK59-1/2	AK59-5/8	AK59-3/4	AK59-7/8	AK59-15/16	AK59-1	AK59-1-1/8			AK59-1-3/16			2.0
5.95	5.70	5.36	1	AK61-1/2	AK61-5/8	AK61-3/4	AK61-7/8	AK61-15/16	AK61-1	AK61-1-1/8			AK61-1-3/16			2.1
6.25	6.00	5.66	1	AK64-1/2	AK64-5/8	AK64-3/4	AK64-7/8	AK64-15/16	AK64-1	AK64-1-1/8			AK64-1-3/16			2.2
6.45	6.20	5.86	1	AK66-1/2	AK66-5/8	AK66-3/4	AK66-7/8		AK66-1	AK66-1-1/8			AK66-1-3/16			2.3
6.95	6.70	6.36	1	AK71-1/2	AK71-5/8	AK71-3/4	AK71-7/8		AK71-1	AK71-1-1/8			AK71-1-3/16	AK71-1-7/16		3.8
7.25	7.00	6.66	1	AK74-1/2	AK74-5/8	AK74-3/4	AK74-7/8	AK74-15/16	AK74-1	AK74-1-1/8			AK74-1-3/16	AK74-1-7/16		3.4
8.25	8.00	7.66	1	AK84-1/2	AK84-5/8	AK84-3/4		AK84-15/16	AK84-1					AK84-1-7/16		3.8
9.25	9.00	8.66	1	AK94-1/2	AK94-5/8	AK94-3/4		AK94-15/16	AK94-1					AK94-1-7/16		4.5
10.25	10.00	9.66	1		AK104-5/8	AK104-3/4			AK104-1					AK104-1-7/16		5.1
10.75	10.50	10.16	1			AK109-3/4			AK109-1					AK109-1-7/16		5.8
13.25	13.00	12.66	1			AK134-3/4			AK134-1					AK134-1-7/16		7.5
14.25	14.00	13.66	1			AK144-3/4			AK144-1					AK144-1-7/16		8.5
2.25	2.00	1.66	1	2AK22-1/2	2AK22-5/8	2AK22-3/4	2AK22-7/8									.9
2.55	2.30	1.96	1		2AK25-5/8	2AK25-3/4	2AK25-7/8		2AK25-1							1.3
2.75	2.50	2.16	1		2AK27-5/8	2AK27-3/4	2AK27-7/8		2AK27-1							1.5
2.85	2.60	2.26	1		2AK28-5/8	2AK28-3/4	2AK28-7/8		2AK28-1							1.8
3.05	2.80	2.46	1		2AK30-5/8	2AK30-3/4	2AK30-7/8		2AK30-1	2AK30-1-1/8						1.8
3.25	3.00	2.66	1		2AK32-5/8	2AK32-3/4	2AK32-7/8		2AK32-1	2AK32-1-1/8						2.1
3.45	3.20	2.86	1		2AK34-5/8	2AK34-3/4	2AK34-7/8		2AK34-1	2AK34-1-1/8						2.3
3.75	3.50	3.16	2		2AK39-5/8	2AK39-3/4	2AK39-7/8		2AK39-1	2AK39-1-1/8						2.6
3.95	3.70	3.36	2		2AK41-5/8	2AK41-3/4	2AK41-7/8		2AK41-1	2AK41-1-1/8						2.9
4.25	4.00	3.66	2		2AK44-5/8	2AK44-3/4	2AK44-7/8		2AK44-1	2AK44-1-1/8						3.0
4.45	4.20	3.86	2				2AK46-7/8		2AK46-1	2AK46-1-1/8						3.1
4.75	4.50	4.16	2			2AK49-3/4	2AK49-7/8		2AK49-1	2AK49-1-1/8						3.6
4.95	4.70	4.36	2			2AK51-3/4	2AK51-7/8		2AK51-1	2AK51-1-1/8						3.8
5.25	5.00	4.66	2		2AK54-5/8	2AK54-3/4	2AK54-7/8		2AK54-1	2AK54-1-1/8						3.3
5.45	5.20	4.86	1		2AK56-5/8	2AK56-3/4			2AK56-1	2AK56-1-1/8						3.4
5.75	5.50	5.16	1			2AK59-3/4			2AK59-1	2AK59-1-1/8						3.5
5.95	5.70	5.36	1			2AK61-3/4	2AK61-7/8		2AK61-1	2AK61-1-1/8						3.6
6.25	6.00	5.66	1			2AK64-3/4			2AK64-1	2AK64-1-1/8			2AK64-1-3/16	2AK64-1-7/16		4.8
7.25	7.00	6.66	1			2AK74-3/4			2AK74-1	2AK74-1-1/8			2AK74-1-3/16	2AK74-1-7/16		5.6

AK SHEAVES - FOR 3L, 4L & A Belts



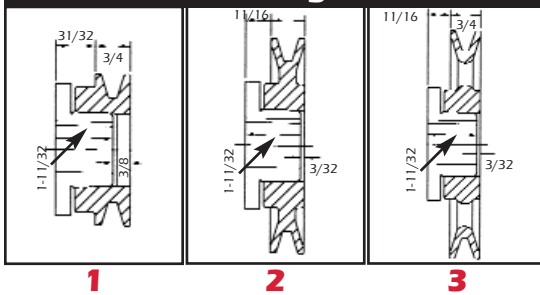
AK BUSHED

2AK Double Groove

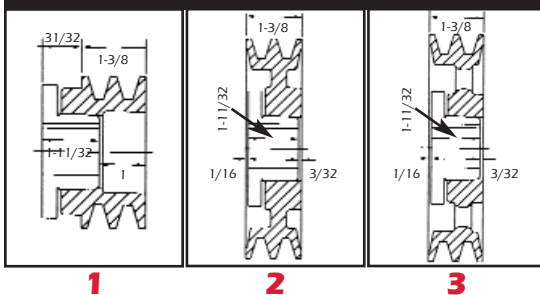


- Light Duty Cast Iron Sheaves
- Machined from Gray Cast Iron
- Statically Balanced and Painted
- Individually Packaged

AK Bushed Single Groove



AK Bushed Double Groove



Item	Bushing Type	Outside	"A" Datum	"3L" Datum	Drawing	Wt. Lbs.
AK30H	H	3.05	2.80	2.46	1	1.10
AK32H	H	3.25	3.00	2.66	1	1.20
AK34H	H	3.45	3.20	2.86	2	1.00
AK39H	H	3.75	3.50	3.16	2	1.40
AK41H	H	3.95	3.70	3.36	2	1.60
AK44H	H	4.25	4.00	3.66	2	1.90
AK46H	H	4.45	4.20	3.86	2	1.90
AK49H	H	4.75	4.50	4.16	2	2.10
AK51H	H	4.95	4.70	4.36	2	2.30
AK54H	H	5.25	5.00	4.66	2	2.00
AK56H	H	5.45	5.20	4.86	2	2.30
AK59H	H	5.75	5.50	5.16	2	2.40
AK61H	H	5.95	5.70	5.36	3	2.50
AK64H	H	6.25	6.00	5.66	3	2.70
AK66H	H	6.45	6.20	5.86	3	2.80
AK69H	H	6.75	6.50	6.16	3	3.20
AK71H	H	6.95	6.70	6.36	3	3.10
AK74H	H	7.25	7.00	6.66	3	3.30
AK79H	H	7.75	7.50	7.16	3	3.50
AK84H	H	8.25	8.00	7.66	3	3.60
AK89H	H	8.75	8.50	8.16	3	4.00
AK94H	H	9.25	9.00	8.66	3	4.40
AK99H	H	9.75	9.50	9.16	3	4.70
2AK30H	H	3.05	2.80	2.46	1	1.40
2AK32H	H	3.25	3.00	2.66	1	1.70
2AK34H	H	3.45	3.20	2.86	1	1.80
2AK39H	H	3.75	3.50	3.16	2	1.80
2AK41H	H	3.95	3.70	3.36	2	1.90
2AK44H	H	4.25	4.00	3.66	2	2.40
2AK46H	H	4.45	4.20	3.86	2	2.50
2AK49H	H	4.75	4.50	4.16	2	3.10
2AK51H	H	4.95	4.70	4.36	2	3.20
2AK54H	H	5.25	5.00	4.66	2	3.40
2AK56H	H	5.45	5.20	4.86	3	3.60
2AK59H	H	5.75	5.50	5.16	3	3.40
2AK61H	H	5.95	5.70	5.36	3	3.30
2AK64H	H	6.25	6.00	5.66	3	3.90
2AK74H	H	7.25	7.00	6.66	3	4.90
2AK84H	H	8.25	8.00	7.66	3	5.80
2AK94H	H	9.25	9.00	8.66	3	6.10
2AK104H	H	10.25	10.00	9.66	3	7.70

Order Bushings Separately

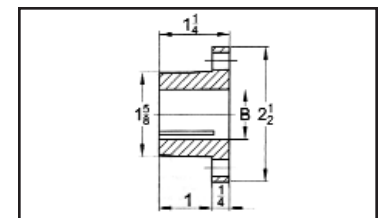
H-Bushings for AK/BK Sheaves

Bushing Nomenclature

H - 1/2

Bushing Type Bore Size

- H-3/8
- H-7/16
- H-1/2
- H-9/16
- H-5/8
- H-11/16
- H-3/4
- H-13/16
- H-7/8
- H-15/16
- H-1
- H-1-1/16
- H-1-1/8
- H-1-3/16
- H-1-1/4
- H-1-5/16
- H-1-3/8
- H-1-7/16
- H-1-1/2



See page 31 for Bore Sizes and Keyseat

BK SHEAVES - FITS 4L, A & 5L, B Belts



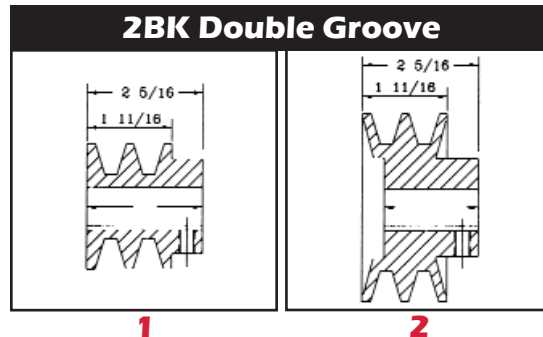
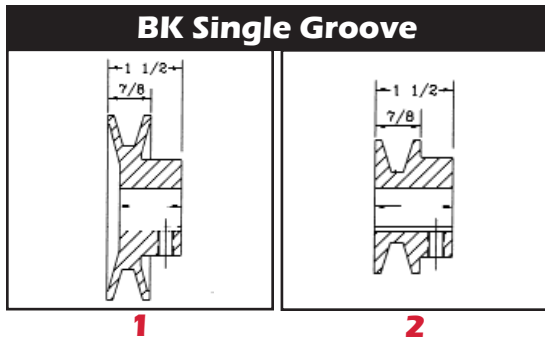
BK - Bored to Size

- Light Duty Cast Iron Sheaves
- Machined from Gray Cast Iron
- Statically Balanced and Painted
- Individually Packaged
- Sealed in Plastic Wrap



BK PACKAGED

Diameter Out Side	Datum Dia			Bore Size											Wt. Lbs.	
	"A" Datum	"B" Datum	Draw No.	1/2"	5/8"	3/4"	7/8"	1"	1-1/8"	1-3/16"	1-3/8"	1-7/16"				
2.50	1.90	2.30	1	BK25-1/2	BK25-5/8	BK25-3/4	BK25-7/8									.5
2.60	2.00	2.40	1	BK26-1/2	BK26-5/8	BK26-3/4	BK26-7/8									.6
2.70	2.10	2.50	2	BK27-1/2	BK27-5/8	BK27-3/4	BK27-7/8									.6
2.95	2.20	2.60	2	BK28-1/2	BK28-5/8	BK28-3/4	BK28-7/8		BK28-1-1/8							.8
3.15	2.40	2.80	2	BK30-1/2	BK30-5/8	BK30-3/4	BK30-7/8									.8
3.35	2.60	3.00	2	BK32-1/2	BK32-5/8	BK32-3/4	BK32-7/8									.8
3.55	2.80	3.20	2	BK34-1/2	BK34-5/8	BK34-3/4	BK34-7/8	BK34-1	BK34-1-1/8							1.3
3.75	3.00	3.40	2	BK36-1/2	BK36-5/8	BK36-3/4	BK36-7/8	BK36-1	BK36-1-1/8							1.5
3.95	3.20	3.60	2	BK40-1/2	BK40-5/8	BK40-3/4	BK40-7/8	BK40-1	BK40-1-1/8							1.5
4.25	3.50	3.90	2	BK45-1/2	BK45-5/8	BK45-3/4	BK45-7/8	BK45-1	BK45-1-1/8							1.8
4.45	3.70	4.10	2	BK47-1/2	BK47-5/8	BK47-3/4	BK47-7/8	BK47-1	BK47-1-1/8							1.9
4.75	4.00	4.40	2	BK50-1/2	BK50-5/8	BK50-3/4	BK50-7/8	BK50-1	BK50-1-1/8							2.0
4.95	4.20	4.60	2	BK52-1/2	BK52-5/8	BK52-3/4	BK52-7/8	BK52-1	BK52-1-1/8							2.0
5.25	4.50	4.90	2	BK55-1/2	BK55-5/8	BK55-3/4	BK55-7/8	BK55-1	BK55-1-1/8	BK55-1-3/16						2.2
5.95	5.20	5.60	2			BK62-3/4	BK62-7/8	BK62-1	BK62-1-1/8	BK62-1-3/16						2.4
6.45	5.70	6.10	2			BK67-3/4	BK67-7/8	BK67-1	BK67-1-1/8							2.8
6.75	6.00	6.40	2			BK70-3/4	BK70-7/8	BK70-1	BK70-1-1/8	BK70-1-3/16			BK70-1-7/16			3.3
6.95	6.20	6.60	2			BK72-3/4	BK72-7/8	BK72-1	BK72-1-1/8							3.9
9.75	9.00	9.40	2			BK100-3/4	BK100-7/8	BK100-1	BK100-1-1/8	BK100-1-3/16	BK100-1-3/8	BK100-1-7/16				5.6
10.75	10.00	10.40	2			BK110-3/4		BK110-1	BK110-1-1/8	BK110-1-3/16	BK110-1-3/8	BK110-1-7/16				6.4
11.25	10.50	10.90	2					BK115-1	BK115-1-1/8			BK115-1-3/8	BK115-1-7/16			6.9
15.75	15.00	15.40	2					BK160-1	BK160-1-1/8	BK160-1-3/16	BK160-1-3/8	BK160-1-7/16				11.4
2.50	1.90	2.30	1	2BK25-1/2	2BK25-5/8	2BK25-3/4	2BK25-7/8									1.3
2.70	2.10	2.50	1	2BK27-1/2	2BK27-5/8		2BK27-7/8									1.6
2.95	2.20	2.60	1	2BK28-1/2	2BK28-5/8	2BK28-3/4	2BK28-7/8	2BK28-1	2BK28-1-1/8							1.9
3.15	2.40	2.80	1	2BK30-1/2	2BK30-5/8	2BK30-3/4	2BK30-7/8	2BK30-1	2BK30-1-1/8							2.3
3.35	2.60	3.00	1		2BK32-5/8		2BK32-7/8	2BK32-1	2BK32-1-1/8							2.6
3.55	2.80	3.20	1		2BK34-5/8	2BK34-3/4	2BK34-7/8	2BK34-1	2BK34-1-1/8							2.8
3.75	3.00	3.40	1			2BK36-3/4	2BK36-7/8	2BK36-1	2BK36-1-1/8		2BK36-1-3/8					3.3
3.95	3.20	3.60	2		2BK40-5/8	2BK40-3/4	2BK40-7/8	2BK40-1	2BK40-1-1/8							3.3
4.25	3.50	3.90	2					2BK45-1	2BK45-1-1/8		2BK45-1-3/8					3.3
4.45	3.70	4.10	2				2BK47-7/8	2BK47-1	2BK47-1-1/8							3.7
4.75	4.00	4.40	2					2BK50-1	2BK50-1-1/8							4.1
4.95	4.20	4.60	2				2BK52-7/8	2BK52-1	2BK52-1-1/8			2BK52-1-3/8				4.5

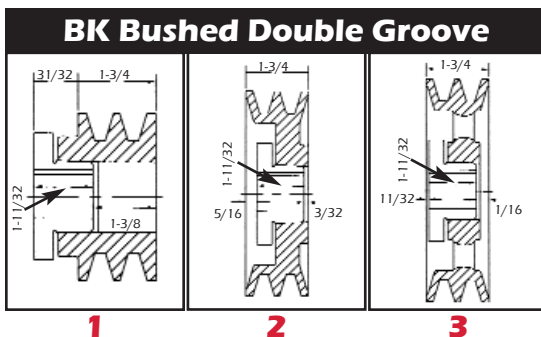
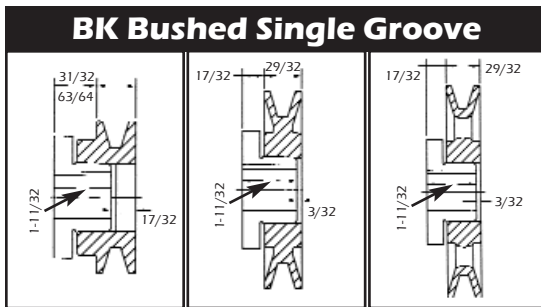


BK SHEAVES - FITS 4L, A & 5L, B Belts



BK BUSHED

- Light Duty Cast Iron Sheaves
- Machined from Gray Cast Iron
- Statically Balanced and Painted
- Individually Packaged

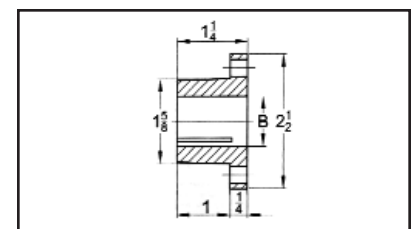


See page 31 for Complete H-Bushing Bore Sizes

Item	Bushing Type	Outside	"A" Datum	"B" Datum	Drawing	Wt. Lbs.
BK30H	H	3.15	2.40	2.80	1	1.20
BK32H	H	3.35	2.60	3.00	1	1.40
BK34H	H	3.55	2.80	3.20	1	1.60
BK36H	H	3.75	3.00	3.40	1	1.20
BK40H	H	3.95	3.20	3.60	1	1.40
BK45H	H	4.25	3.50	3.90	1	1.80
BK47H	H	4.45	3.70	4.10	1	2.20
BK50H	H	4.75	4.00	4.40	2	2.00
BK52H	H	4.95	4.20	4.60	2	2.10
BK55H	H	5.25	4.50	4.90	2	2.70
BK57H	H	5.45	4.70	5.10	2	2.70
BK60H	H	5.75	5.00	5.40	3	2.50
BK62H	H	5.95	5.20	5.60	3	2.60
BK65H	H	6.25	5.50	5.90	3	2.80
BK67H	H	6.45	5.70	6.10	3	2.90
BK70H	H	6.75	6.00	6.40	3	2.80
BK72H	H	6.95	6.20	6.60	3	3.10
BK75H	H	7.25	6.50	6.90	3	3.30
BK80H	H	7.75	7.00	7.40	3	3.40
BK85H	H	8.25	7.50	7.90	3	3.80
BK90H	H	8.75	8.00	8.40	3	4.30
BK95H	H	9.25	8.50	8.90	3	5.00
BK100H	H	9.75	9.00	9.40	3	5.20
BK105H	H	10.25	9.50	9.90	3	5.50
BK110H	H	10.75	10.00	10.40	3	6.00
BK115H	H	11.25	10.50	10.90	3	6.40
BK120H	H	11.75	11.00	11.40	3	6.90
BK130H	H	12.75	12.00	12.40	3	6.90
BK140H	H	13.75	13.00	13.40	3	8.50
BK150H	H	14.75	14.00	14.40	3	9.50
BK160H	H	15.75	15.00	15.40	3	9.80
BK190H	H	18.75	18.00	18.40	3	12.80
2BK32H	H	3.35	2.60	3.00	1	2.10
2BK34H	H	3.55	2.80	3.20	1	2.40
2BK36H	H	3.75	3.00	3.40	1	2.00
2BK40H	H	3.95	3.20	3.60	2	2.40
2BK45H	H	4.25	3.50	3.90	2	3.00
2BK47H	H	4.45	3.70	4.10	2	2.80
2BK50H	H	4.75	4.00	4.40	2	3.30
2BK52H	H	4.95	4.20	4.60	2	3.60
2BK55H	H	5.25	4.50	4.90	2	3.90
2BK57H	H	5.45	4.70	5.10	2	4.30
2BK60H	H	5.75	5.00	5.40	3	4.40
2BK62H	H	5.95	5.20	5.60	3	4.50
2BK65H	H	6.25	5.50	5.90	3	4.50
2BK67H	H	6.45	5.70	6.10	3	5.00
2BK70H	H	6.75	6.00	6.40	3	5.10
2BK80H	H	7.75	7.00	7.40	3	6.40
2BK90H	H	8.75	8.00	8.40	3	7.60
2BK100H	H	9.75	9.00	9.40	3	8.40
2BK110H	H	10.75	10.00	10.40	3	9.30
2BK120H	H	11.75	11.00	11.40	3	11.00
2BK130H	H	12.75	12.00	12.40	3	13.10
2BK140H	H	13.75	13.00	13.40	3	14.80
2BK160H	H	15.75	15.00	15.40	3	17.50
2BK190H	H	18.75	18.00	18.40	3	21.50

Standard Keyseat

Bore Range	Keyseat
1/2"	None
5/8 to 7/8	3/16" x 3/32"
15/16 to 1-3/16	1/4 x 1/8
1-3/8	5/16 x 5/32
1-7/16	3/8 x 3/16



VARIABLE PITCH SHEAVES
Fits 3L, 4L, 5L, A, or B Belts

Dia Pitch Out Side	Datum Dia			Bore Size								Wt. Lbs.	
	3L Belts	"A" Belts	5" or "B" Belts	1/2"	5/8"	3/4"	7/8"	1"	1-1/8"	1-3/8"	1-5/8"		
2.50	1.6-2.4			1VL25-1/2	1VL25-5/8								0.8
2.87	1.8-2.7			1VL30-1/2	1VL30-5/8								1.0
3.15	1.7-2.5	1.9-2.9	2.4-3.2	1VL34-1/2*	1VL34-5/8*	1VL34-3/4							1.1
3.75	2.3-3.1	2.4-3.4	2.7-3.7	1VL40-1/2	1VL40-5/8	1VL40-3/4	1VL40-7/8						1.3
4.15	2.7-3.5	2.8-3.8	3.1-4.1	1VL44-1/2	1VL44-5/8	1VL44-3/4	1VL44-7/8						1.3
4.75	3.3-4.1	3.4-4.4	3.7-4.7		1VM50-5/8		1VM50-7/8						2.8
2.32	1.4-2.2			1VP25-1/2									0.7
3.15	1.7-2.5	1.9-2.9	2.4-3.2		1VP34-5/8								1.4
3.75	2.3-3.1	2.4-3.4	2.7-3.7		1VP40-5/8	1VP40-3/4							1.9
4.15	2.7-3.5	2.8-3.8	3.1-4.1	1VP44-1/2	1VP44-5/8	1VP44-3/4							2.4
4.15	2.7-3.5	2.8-3.8	3.1-4.1				1VP44-7/8	1VP44-1	1VP44-1-1/8				2.9
4.75	3.3-3.4	3.4-4.4	3.7-4.7	1VP50-1/2									2.9
4.75	3.3-3.4	3.4-4.4	3.7-4.7					1VP50-1	1VP50-1-1/8				3.6
5.35	3.9-4.7	4.0-5.0	4.3-5.3	1VP56-1/2	1VP56-5/8	1VP56-3/4							3.8
5.35	3.9-4.7	4.0-5.0	4.3-5.3				1VP56-7/8	1VP56-1	1VP56-1-1/8				4.4
6.00		4.2-5.2	4.3-5.5						1VP60-1-1/8	1VP60-1-3/8			6.5
5.95	4.5-5.3	4.6-5.6	4.9-5.9				1VP62-7/8	1VP62-1	1VP62-1-1/8	1VP62-1-3/8			6.1
6.50		4.7-5.7	4.8-6.0				1VP65-7/8		1VP65-1-1/8	1VP65-1-3/8			6.8
6.55	5.1-5.9	5.2-6.2	5.5-6.5				1VP68-7/8	1VP68-1	1VP68-1-1/8				7.3
7.10		5.3-6.3	5.4-6.6				1VP71-7/8		1VP71-1-1/8	1VP71-1-3/8			8.2
7.50		5.7-6.7	5.8-7.0				1VP75-7/8		1VP75-1-1/8	1VP75-1-3/8			9.2
3.35	1.9-2.7	2.0-3.0	2.5-3.3		2VP36-5/8	2VP36-3/4	2VP36-7/8						3.4
3.95	2.5-3.3	2.6-3.6	2.9-3.9		2VP42-5/8	2VP42-3/4	2VP42-7/8	2VP42-1	2VP42-1-1/8				4.4
4.75	3.3-4.1	3.4-4.4	3.7-4.7		2VP50-5/8	2VP50-3/4	2VP50-7/8	2VP50-1	2VP50-1-1/8				6.3
5.35	3.9-4.7	4.0-5.0	4.3-5.3		2VP56-5/8	2VP56-3/4	2VP56-7/8	2VP56-1	2VP56-1-1/8				7.8
6.00		4.2-5.2	4.3-5.5			2VP60-3/4	2VP60-7/8	2VP60-1	2VP60-1-1/8	2VP60-1-3/8	2VP60-1-5/8		10.6
5.95	4.5-5.3	4.6-5.6	4.9-5.9				2VP62-7/8		2VP62-1-1/8	2VP62-1-3/8			10
6.50		4.7-5.7	4.8-6.0						2VP65-1-1/8	2VP65-1-3/8	2VP65-1-5/8		12.3
6.55	5.1-5.9	5.2-6.2	5.5-6.5						2VP68-1-1/8	2VP68-1-3/8	2VP68-1-5/8		11.7
7.10		5.3-6.3	5.4-6.6						2VP71-1-1/8	2VP71-1-3/8	2VP71-1-5/8		14.6
7.50		5.7-6.7	5.8-7.0						2VP75-1-1/8	2VP75-1-3/8	2VP75-1-5/8		16.5

* For 2 Set Screws, add "ZSS" after part number

See Page 32 for Variable Pitch Length Diameter Chart

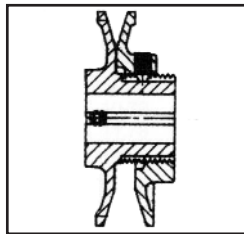
Bored to Size



1VP



2VP



- 1VP - Single Groove Pulley
- 2VP - 2-Groove Pulley
- Includes Hollow Head Set Screws and Keyseat
- Use standard Jason sheaves as a companion sheave.

AL (BLOWER) SHEAVES

Diameter Outside	A-Datum	Bore Size			Wt. Lbs.
		5/8"	3/4"	1"	
4.93	4.78	AL54-5/8	AL54-3/4	AL54-1	1.1
5.93	5.78	AL64-5/8	AL64-3/4	AL64-1	1.2
6.93	6.78	AL74-5/8	AL74-3/4	AL74-1	1.5
7.93	7.78	AL84-5/8	AL84-3/4	AL84-1	1.8
7.93	7.78			AL84-1-Y	1.8
8.93	8.78		AL94-3/4	AL94-1	2.4
9.93	9.78		AL104-3/4	AL104-1	2.9
10.93	10.78		AL114-3/4	AL114-1	3.1
11.93	11.78		AL124-3/4	AL124-1	3.8



- Light Duty Applications
- Includes Set Screw and Keyseat
- Cast Aluminum

Not to Be Used with "AX" Notched Belt Rated Drives